

Cathedral of Saint Matthew the Apostle

Washington, District of Columbia

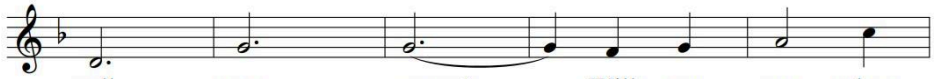
Sixth Sunday in Ordinary Time
February 11, 2024

Celebration of the Eucharist at 5:30pm

Entrance Hymn The Summons



1. Will you come and fol - low me If I but
2. Will you leave your - self be - hind If I but
3. Will you let the blind - ed see If I but
4. Will you love the 'you' you hide If I but
5. Lord, your sum - mons ech - oes true When you but



call your name? Will you go where
call your name? Will you care for
call your name? Will you set the
call your name? Will you quell the
call my name. Let me turn and



you don't know And nev - er be the same?
cruel and kind And nev - er be the same?
pris - 'ners free And nev - er be the same?
fear in - side And nev - er be the same?
fol - low you And nev - er be the same.

Hymn continues on next page

Will you let my love be shown, Will you
 Will you risk the hos - tile stare Should your
 Will you kiss the lep - er clean, And do
 Will you use the faith you've found To re -
 In your com - pa - ny I'll go Where your

let my name be known, Will you let my
 life at - tract or scare? Will you let me
 such as this un - seen, And ad - mit to
 shape the world a - round, Through my sight and
 love and foot - steps show. Thus I'll move and

life be grown In you and you in me?
 an - swer prayer In you and you in me?
 what I mean In you and you in me?
 touch and sound In you and you in me?
 live and grow In you and you in me.

Text: John L. Bell, b.1949, © 1987, Iona Community, GIA Publications, Inc., agent
 Tune: KELVINGROVE, 7 6 7 6 777 6; Scottish traditional; arr. by John L. Bell, b.1949

Glory to God

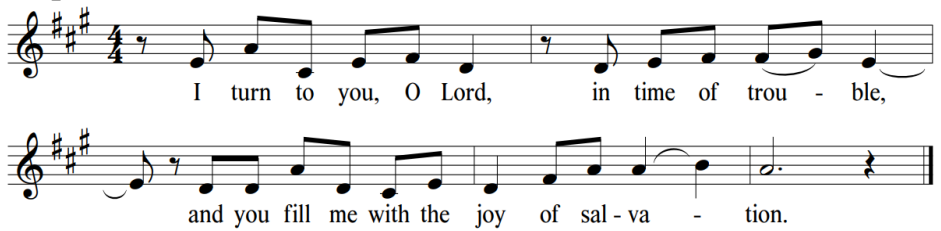
Glo - ry to God in the high - est, and on

earth peace to peo - ple of good will. *To verses*

will. A - men, a - men, a - men. *Last time*

Text: ICEL, © 2010
 Music: *Storrington Mass*, Marty Haugen, © 2010, GIA Publications, Inc.

Responsorial Psalm



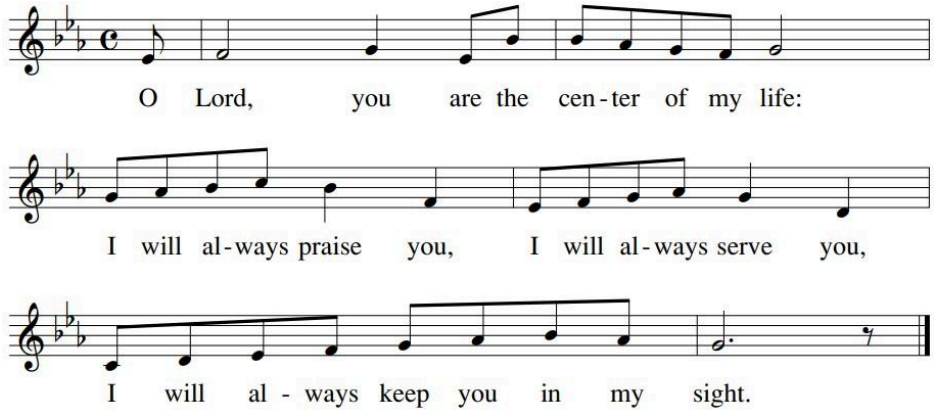
I turn to you, O Lord, in time of trou - ble,
and you fill me with the joy of sal - va - tion.

Refrain Copyright © 1969, 1981, 1997, International Commission on English in the Liturgy Corporation
Music by Luke Mayernik, Copyright © 2017 Birnamwood Publications, A division of MorningStar Music Publishers, Inc.



Please scan this QR code to contribute to St. Matthew's Cathedral so that we may continue to serve the needs of our parish community and those who come to us for assistance and comfort.

Preparation Hymn Center of My Life



O Lord, you are the cen - ter of my life:
I will al - ways praise you, I will al - ways serve you,
I will al - ways keep you in my sight.

Text: Psalm 16; verses trans. © 1963, The Grail, GIA Publications, Inc., agent; refrain, Paul Inwood, b.1947, © 1985, Paul Inwood
Tune: Paul Inwood, b.1947, © 1985, Paul Inwood
Published by OCP.

Permission to reprint the music in this service obtained from ONE LICENSE with license #A-701294. All rights reserved.

Communion Ubi caritas est vera

Refrain

*U - bi cá - ri - tas est ve - ra, est ve - ra:

De - us i - bi est, De - us i - bi est.

Text: Refrain and vss. 1, 2 and 5 based on *Ubi Caritas*, 9th c.; vss. 3, 4, Bob Hurd, b.1950; Spanish by Pedro Rubalcava, b.1958
Tune: Bob Hurd b.1950; acc. by Craig K. Kingsbury, b.1952
© 1996, 2004, Bob Hurd. Published by OCP.

Final Hymn God Sends Us Forth

1. God sends us forth to love and serve,
2. Nour - ished by Christ, our Word and Bread,
3. Called to the ones the world ig - nores—
4. So, with the cross to lead the way,

Make known God's name and live God's word,
Burn - ing with love and Spir - it - led,
Hun - gry and thirst - y, weak and poor—
Let us go forth in peace to - day,

Mir - ror God's love, re - flect God's grace Till
Sent to em - brace a world in need, To
Let us bear Christ, who heals all pain And
And to the ends of earth make known The

all have seen the Sav - ior's face.
make God known in word and deed.
com - forts those bowed down by shame.
sav - ing love our God has shown.

Text: Tony E. Alonso, b.1980
Tune: GAILHAC, LM; Tony E. Alonso, b.1980
© 2009, GIA Publications, Inc.