

Cathedral of Saint Matthew the Apostle

Washington, District of Columbia

Sixteenth Sunday of Ordinary Time

July 18, 2021

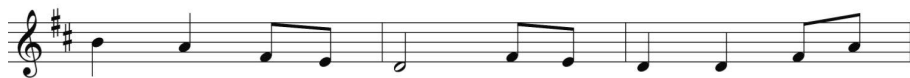
Celebration of the Eucharist at 5:30pm

Please take a moment before the liturgy to silence your phone.

Entrance Hymn Praise the One Who Breaks the Darkness



1. Praise the One who breaks the dark - ness With a
2. Praise the One who blessed the chil - dren With a
3. Praise the one true love in - car - nate: Christ, who



lib - er - at - ing light. Praise the One who frees the
strong yet gen - tle word. Praise the One who drove out
suf - fered in our place. Je - sus died and rose for



pris - 'ners, Turn - ing blind - ness in - to sight.
de - mons With a pierc - ing, two - edged sword.
man - y That we may know God by grace.



Praise the One who preached the gos - pel, Heal - ing
Praise the One who brings cool wa - ter To the
Let us sing for joy and glad - ness, See - ing



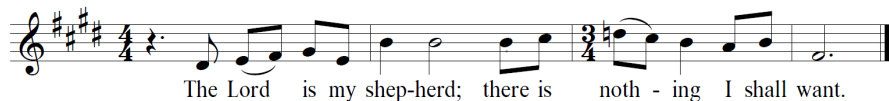
ev - 'ry dread dis - ease, Calm - ing storms and feed - ing
des - ert's burn - ing sand. From this well comes liv - ing
what our God has done. Praise the one re - deem - ing



thou - sands With the ver - y bread of peace.
wa - ter Quench - ing thirst in ev - 'ry land.
glo - ry; Praise the One who makes us one.

Responsorial Psalm

Sixteenth Sunday in Ordinary Time B



Refrain Copyright © 1969, 1981, 1997, International Commission on English in the Liturgy Corporation
Music by Luke Mayermick, Copyright © 2017 Birnamwood Publications, A division of MorningStar Music Publishers, Inc.

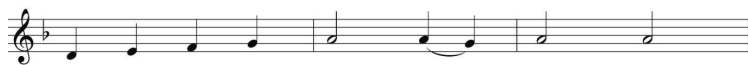
Preparation Hymn You, Lord, Are Both Lamb and Shepherd



1. You, Lord, are both Lamb and Shep - herd.
2. Clothed in light up - on the moun - tain,
3. You, who walk each day be - side us,
4. Wor - thy is our earth - ly Je - sus!



You, Lord, are both prince and slave.
Stripped of might up - on the cross,
Sit in pow - er at God's side!
Wor - thy is our cos - mic Christ!



You, peace - mak - er and sword - bring - er
Shin - ing in e - ter - nal glo - ry,
You, who preach a way that's nar - row,
Wor - thy your de - feat and vic - t'ry.



Of the way you took and gave.
Beg - gar'd by a sol - dier's toss.
Have a love that reach - es wide.
Wor - thy still your peace and strife.



You, the ev - er - last - ing in - stant;
You, the ev - er - last - ing in - stant;
You, the ev - er - last - ing in - stant;
You, the ev - er - last - ing in - stant;

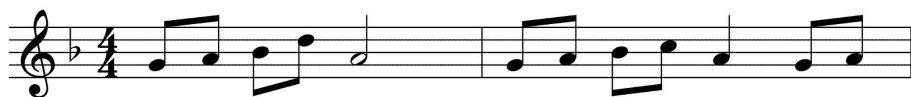


You, whom we both scorn and crave.
You, who are both gift and cost.
You, who are our pil - grim guide.
You, who are our death and life.

Communion Hymn You Are All I Want

Psalm 23, adapt. L.T.

Lori True



You are all I want; you are all I need; you a-



lone are my de - light. You



shep-herd me with love; you lead me through the dark-ness of



night; in you my heart shall rest.

Copyright © 2003 by GIA Publications, Inc. • All Rights Reserved



Please scan this QR code to contribute to St. Matthew's Cathedral so that we may continue to serve the needs of our parish community and those who come to us for assistance and comfort.

Final

Earth, Earth, Awake!



1. Earth, earth, a - wake! Your prais-es sing! Al-le-lu - ia!
2. All na - ture sings of hope re - born! Al-le-lu - ia!
3. Win - ter is past; the night is gone! Al-le-lu - ia!
4. Praise we the Fa - ther, Spir - it, Son! Al-le-lu - ia!



Greet with the dawn your ris - en King! Al-le-lu - ia!
Christ lives to com - fort those who mourn! Al-le-lu - ia!
Christ's light, tri - um - phant, brings the dawn! Al-le-lu - ia!
Praise we the vic - t'ry God has won! Al-le-lu - ia!



Bright suns and stars, your hom - age pay! Al-le-lu - ia!
First fruit of all the dead who sleep! Al-le-lu - ia!
Cre - a - tion spreads its spring-time bloom! Al-le-lu - ia!
Praise we the Lamb who reigns a - bove! Al-le-lu - ia!



Life reigns a - gain this East - er day! Al-le-lu - ia!
Prom - ise of joy for all who weep! Al-le-lu - ia!
Life bursts like flame from death's cold tomb! Al-le-lu - ia!
Praise we the King whose rule is love! Al-le-lu - ia!

Text: Herman G. Stuempfle, Jr., 1923–2007
Tune: STUEMPFLE, LM with alleluias; Sally Ann Morris, b.1952
© 1996, GIA Publications, Inc.

Permission to reprint the music in this service obtained from
ONE LICENSE with license #A-701294. All rights reserved.