

Cathedral of Saint Matthew the Apostle
Twenty-first Sunday of Ordinary Time
August 22, 2021 10:00 am

*Please take a moment before the liturgy to silence your phone
and remove as many distractions as possible from your attention.*

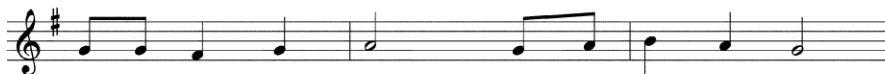
PRELUDE

Fugue in g minor

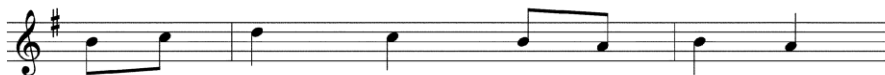
J.S. Bach

ENTRANCE HYMN

JESUS LEAD THE WAY



1. Je - sus, lead the way Through our life's long day,
2. Je - sus be our light, In the midst of night,
3. When in deep - est grief, Strength - en our be - lief.
4. Je - sus, still lead on 'Til our rest be won:



When at times the way is cheer - less,
Let not faith - less fear o'er - take us,
When temp - ta - tions come al - lur - ing,
If you lead us through rough plac - es,



Help us fol - low, calm and fear - less;
Let not faith and hope for - sake us;
Make us pa - tient and en - dur - ing;
Grant us your re - deem - ing grac - es.



Guide us by your hand To the prom - ised land.
May we feel you near As we wor - ship here.
Lord we seek your grace In this ho - ly place.
When our course is o'er, O - pen heav - en's door.

Text: *Jesu, geh voran*; Nicholas L. von Zinzendorf, 1700-1760; tr. by Jane Borthwick, 1813-1897, alt.
Tune: ROCHELLE, 55 88 55; Adam Drese, 1620-1701; harm. alt.

Used with permission.under OneLicense.net A-701-294. All Rights Reserved.

GLORIA

STAFFORD

I Cantor/Choir

Glo-ry to God in the high-est, and on earth peace to peo-ple of good will.

II Assembly

We praise you, we bless you, we a-dore you, we glo-ri - fy you,

I

we give you thanks for your great glo - ry, Lord God, heav-en - ly King,

II

O God, al-might-y Fa-ther. Lord Je-sus Christ, On-ly Be-got-ten Son,

I

Lord God, Lamb of God, Son of the Fa-ther, you take a - way the sins

II

of the world, have mer-cy on us; you take a-way the sins of the world,

I

re-ceive our prayer; you are seat-ed at the right hand of the Fa-ther, have

II

mer-cy on us. For you a-lone are the Ho-ly One, you a-lone are the Lord,

I

you a - lone are the Most High, Je - sus Christ, with the Ho - ly Spir - it,

I, II

in the glo-ry of God the Fa-ther. A - men, a - men.

Text and music © 1965, 1966, 1968, 1973, WLP.

Used with permission under OneLicense.net A-701-294. All Rights Reserved.

RESPONSORIAL PSALM



Taste and see the good-ness of the Lord.

KIP

Text: *The Revised Grail Psalms*, © 2010, Conception Abbey and The Grail, admin. by GIA Publications, Inc.;
Refrain, *Lectionary for Mass*, © 1969, 1981, 1997, ICEL
Music: Richard Proulx, © 1975, GIA Publications, Inc.
Used with permission.under OneLicense.net A-701-294. All Rights Reserved.

GOSPEL ACCLAMATION

Robert Twynam

PREPARATION Be Merciful To Me, Oh Lord Johann Pachelbel



Please scan this QR code with your phone to contribute to St. Matthew's Cathedral so that we may continue to serve the needs of our parish community and those who come to us for assistance and comfort.

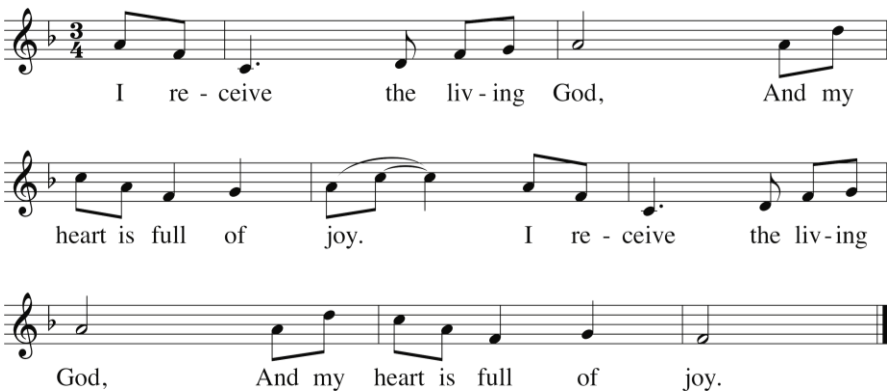
EUCCHARISTIC PRAYER ACCLAMATIONS

COMMUNITY MASS

Richard Proulx

COMMUNION HYMN I RECEIVE THE LIVING GOD

Refrain



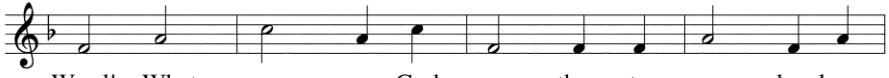
I re - ceive the liv - ing God, And my
heart is full of joy. I re - ceive the liv - ing
God, And my heart is full of joy.

RECESSIONAL**HOW FIRM A FOUNDATION**

1. How firm a founda - tion, you saints of the
 2. "Fear not, I am with you, O be not dis -
 3. "When through the deep wa - ters I call you to
 4. "The soul that on Je - sus still leans for re -



Lord, Is laid for your faith in this ex - cel - lent
 mayed, For I am your God, and will still give you
 go, The riv - ers of woe shall not you o - ver -
 pose, I will not, I will not de - sert to its



Word! What more can God say than to you has been
 aid; I'll strength - en you, help you, and cause you to
 flow; For I will be with you, your trou - bles to
 foes; That soul, though all hell should en - deav - or to



said, To you who for ref - uge to Je - sus have fled?
 stand, Up - held by my right - eous, om - nip - o - tent hand.
 bless, And sanc - ti - fy to you, your deep - est dis - tress.
 shake, I'll nev - er, no nev - er, no nev - er for - sake!"

Text: 2 Peter 1:4; "K" in Rippon's *A Selection of Hymns*, 1787

Tune: FOUNDATION, 11 11 11 11; Funk's *Compilation of Genuine Church Music*, 1832; harm. by Richard Proulx, b.1937

Used with permission.under OneLicense.net A-701-294. All Rights Reserved.

POSTLUDE**Fugue in G Major****J.S. Bach**