

Cathedral of Saint Matthew the Apostle
Twenty-ninth Sunday of Ordinary Time
October 17, 2021 5:30pm (Vigil), 9:00am 11:00am

Please silence your phone and remove as many distractions as possible from your attention.

PRELUDE

Epistle Sonata

W. A. Mozart

CHORAL PRELUDE

Lord Jesus Christ, Humbled Himself

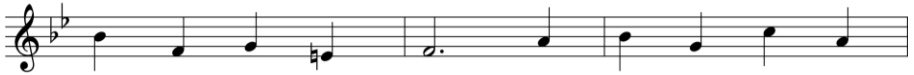
G. Messaus

ENTRANCE HYMN

LORD, HELP US WALK YOUR SERVANT WAY



1. Lord, help us walk your ser - vant way Wher -
2. You came to earth, O Christ, as Lord, But
3. No gold - en scep - ter but a towel You
4. You bid us bend our hu - man pride Nor
5. Lord, help us walk your ser - vant way Wher -



ev - er love may lead And, bend - ing low, for -
pow'r you laid a - side. You lived your years in
place with - in the hands Of those who seek to
count our - selves a - bove The low - est place, the
ev - er love may lead And bend - ing low, for -



get - ting self, Each serve the oth - er's need.
ser - vant - hood, In low - li - ness you died.
fol - low you And live by your com - mands.
mean - est task That waits the gift of love.
get - ting self, Each serve the oth - er's need.

Text: Herman G. Stuempfle, Jr., 1923–2007, © 1997, GIA Publications, Inc.
Tune: ST. ANNE, CM; attr. to William Croft, 1678–1727; harm. composite from 18th c. versions
Used with permission.under OneLicense.net A-701-294. All Rights Reserved.

GLORIA

GOUIN

Glo - ry to God in the high - est, and on
 earth peace to peo - ple of good will. We praise you, we
 bless you, we a - dore you, we glo - ri - fy you, we
 give you thanks for your great glo - ry,
 Lord God, heav - en - ly King, O - God, al - might - y
 Fa - ther. Lord Je - sus Christ, On - ly Be - got - ten Son,
 Lord God, Lamb of God, Son of the Fa - ther, you take a - way the
 sins of the world, have mer - cy on us; you take a - way the
 sins of the world, re - ceive our prayer; you are seat - ed at the
 right hand of the Fa - ther, have mer - cy on us.
 For you a - lone are the Ho - ly One, you a - lone are the
 Lord, you a - lone are the Most High, Je - sus
 Christ, with the Ho - ly Spir - it, in the glo - ry of God the
 Fa - ther. A - men, a - men.

RESPONSORIAL PSALM



Lord, let your mer-cy be on us, as we place our trust in you.

Text: *The Revised Grail Psalms*, © 2010, Conception Abbey and The Grail, admin. by GIA Publications, Inc.;

Refrain, *Lectionary for Mass*, © 1969, 1981, 1997, ICEL

Music: Richard Proulx, © 1986, GIA Publications, Inc.

Used with permission.under OneLicense.net A-701-294. All Rights Reserved.

GOSPEL ACCLAMATION

Howard Hughes, S.M.

PREPARATION 5:30PM Elevation #43 Dom Paul Benoit, O.S.B

Choral

Meditabor in Mandatis

G.P. da Palestrina



Please scan this QR code with your phone to contribute to St. Matthew's Cathedral so that we may continue to serve the needs of our parish community and those who come to us for assistance and comfort.

EUCHARISTIC PRAYER ACCLAMATIONS

MASS FOR THE CITY

Richard Proulx

COMMUNION HYMN CENTER OF MY LIFE



O Lord, you are the cen-ter of my life:



I will al-ways praise you, I will al-ways serve you,



I will al - ways keep you in my sight.

Text: Psalm 16; verses trans. © 1963, The Grail, GIA Publications, Inc., agent; refrain, Paul Inwood, b.1947, © 1985, Paul Inwood

Tune: Paul Inwood, b.1947, © 1985, Paul Inwood

Published by OCP.

Used with permission.under OneLicense.net A-701-294. All Rights Reserved.

Choral

9:00

Be Thou My Vision

Wm. Culverhouse

11:00

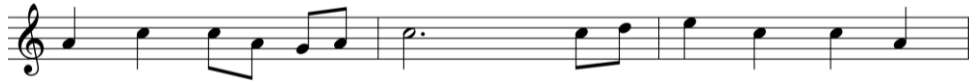
How Lovely are the Messengers

F. Mendelssohn

RECESSIONAL HYMN IN CHRIST THERE IS NO EAST OR WEST



1. In Christ there is no east or west, In
2. In him shall true hearts ev - 'ry - where Their
3. Join hands, dis - ci - ples in the faith, What -
4. In Christ now meet both east and west, In



him no south or north, But one great fam - 'ly
high com - mun - ion find; His serv - ice is the
e'er your race may be! Who serve each oth - er
him meet south and north; All Christ - ly souls are



bound by love Through-out the whole wide earth.
gold - en cord Close bind - ing hu - man - kind.
in Christ's love Are sure - ly kin to me.
one in him Through-out the whole wide earth.

Text: Galatians 3:23; William A. Dunkerley, 1852–1941, alt.
Tune: McKEE, CM; African American; adapt. by Harry T. Burleigh, 1866–1949

POSTLUDE Toccata from Symphony for Grand Organ Boulnois

Organ Recital

Wednesday, October 20, 2021 · 12:40pm

James D. Wetzel helps to kick off the fall portion of our 2021 Cathedral Great Organ Concert Series with a recital following the 12:10pm Mass, open to the public and livestreamed from the Cathedral on our YouTube Channel. Come, bring a friend, and enjoy this 40-minute program in person, or watch live or later.

Featured Works

W.A Mozart Fantasia in F minor [for Mechanical Organ], K. 608

César Franck Trois Chorals: Choral No. 2 in B minor

Percy Whitlock Plymouth Suite IV. Salix

Charles-Marie Widor Symphonie No. 3, Op. 13, No. 3 III. Marcia